



Key Statistics

Listing (FTSE-250)	London Stock Exchange
Ticker	TRIG.L
Share Price (26 March 2020)	120.0p
2020 Target Dividend/Share ¹	6.76p
Shares in Issue	1,637,453,267
Latest NAV/Share (31 December 2020)	115.0p
Market Capitalisation ²	£2.0 billion
Dividend Yield ²	5.6%
Ongoing Charges Ratio (2019)	1.0%

Board (Non-Executive)

Chairman	Helen Mahy CBE
Director (SID)	Shelagh Mason
Director	Klaus Hammer
Director	Jon Bridel
Director	Tove Feld



Investment Manager

InfraRed Capital Partners

- a leading infrastructure and real estate investment manager
- offices in London, New York, Mexico City, Hong Kong, Seoul and Sydney
- US\$12bn of equity capital under management
- Authorised and regulated by the Financial Conduct Authority



Operations Manager

Renewable Energy Systems

- a leading independent renewable energy company
- operations in 10 countries
- over 40 staff supporting TRIG
- TRIG Right of First Offer over RES's Northern European onshore wind and solar projects

Generating Sustainable Value.

Purpose

To generate sustainable returns from a diversified portfolio of renewables infrastructure that contribute towards a zero-carbon future

Introduction

The Renewables Infrastructure Group Limited (“TRIG”): an investment company focused primarily on wind and solar energy infrastructure in the UK and Europe

Targeting total dividends for 2020 of 6.76p / share in four equal quarterly instalments¹

Investment Portfolio

Investments in over 70 renewable energy generation projects with 1.7GW of capacity

Long-term project revenues with inflation linkage via regulated incentives and exposure to energy prices

Geographic diversification: weather patterns, regulatory regimes and power markets (see segmentation data on page 2)

Objectives

TRIG invests principally in a diversified range of operational renewable energy infrastructure assets

It seeks to provide an attractive, long-term income-based return with a positive correlation to inflation

It aims to increase the portfolio's scale and diversification through further acquisitions

TRIG's Environmental, Social and Governance objectives are to: mitigate climate change, preserve the natural environment, positively impact the communities in which TRIG works and to maintain ethics and integrity in governance

Investment Policy

Focus on the UK (representing not less than 35% of the portfolio upon investment) and on other parts of Europe (e.g. France, Germany, Scandinavia and Ireland)

Focus on wind and solar; other technologies (e.g. storage, demand-side projects) may represent up to 20% of portfolio value

Development or construction limit: 15% of portfolio value. Single asset limit: 20% of portfolio value

Limit on project-level non-recourse debt: 50% of gross portfolio value; limit on short-term group-level debt (principally for acquisitions): 30% of portfolio equity value

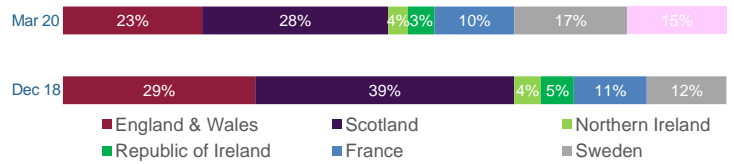
See TRIG's website, trig-ltd.com, for the full Investment Policy and Sustainability Policy



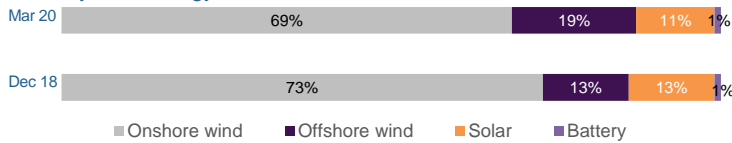
Portfolio Segmentation³

	Solar	Onshore wind	Offshore wind	Battery storage	Total
Projects	28	42	3	1	74
Net Capacity (MW)	156	1,264	224	20	1,664

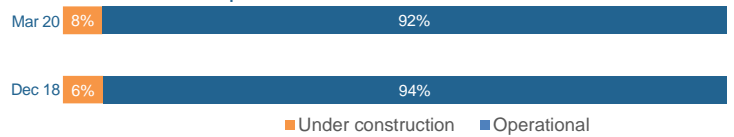
By Jurisdiction/ Power Market⁴



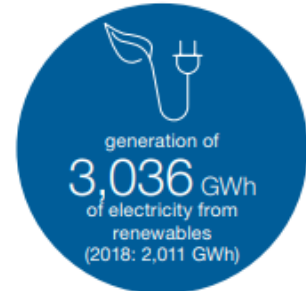
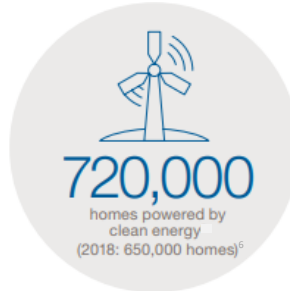
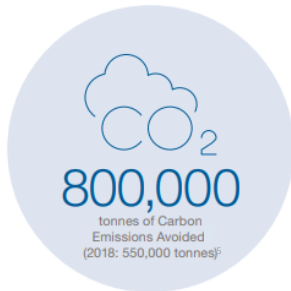
By Technology



Construction Exposure



2019 Sustainability Performance



Company Information

Index Inclusion	FTSE 250 / 350 / High Yield / All Share
Registration	Guernsey: 56716
Dividends	Quarterly (Mar/Jun/Sep/Dec)
Year End	31 December
SEDOL	BBHX2H9
ISIN	GG00BBHX2H91
Registered Address	The Renewables Infrastructure Group East Wing, Trafalgar Court, Les Banques, St Peter Port, Guernsey GY1 3PP
Administrator /Company Secretary	Aztec Financial Services (Guernsey), East Wing, Trafalgar Court, Les Banques, St Peter Port, Guernsey GY1 3PP +44 (0)1481 748831 Contact: Chris Copperwaite

Investment Manager

InfraRed Capital Partners
12 Charles II Street
London SW1Y 4QU
+44 (0)20 7484 1800

Contact: Richard Crawford
E: triginfo@ircp.com
W: www.ircp.com

Operations Manager

Renewable Energy Systems
Beaufort Court, Egg Farm Lane
Kings Langley, Herts
+44 (0)1923 299 200

Contact: Jaz Bains
E: info@res-group.com
W: www.res-group.com

Public Relations

Maitland /AMO
3 Pancras Square
London N1C 4AG
+44 (0)20 7379 5151

Contact: James Isola
E: trig-maitlandamo@maitland.co.uk
W: www.maitlandgroup.com

Registrar

Link Asset Services (Guernsey)
Mont Crevelt House
Bulwer Avenue, St. Sampson
Guernsey GY2 4LH

Helpline: 0871 664 0300
+44 (0)20 8639 3399
(overseas)

1. The indicated dividends or returns are not profit forecasts and there can be no assurance that these can be achieved. They should not be seen as an indication of the Company's expected or actual results. Capital is at risk and the actual outcome will, inter alia, depend on factors such as wholesale power prices, the regulatory environment, portfolio electricity production, discount rates applicable to renewables projects and inflation rates, each of which is a key factor in the returns from the Company's portfolio.
2. Based on data as at 26 March 2020: target dividend for 2020 and total voting rights and share price at 26 March 2020.
3. Portfolio segmentation at March 2020 is based on the last valuation at 31 December 2019, including subsequent additions and commitments at cost.
4. Northern Ireland and the Republic of Ireland together operate a Single Electricity Market (SEM), distinct from Great Britain.
5. In accordance with the IFC Approach to GHG Accounting for Renewables Energy.
6. The number of homes that the portfolio could have powered the equivalent of over 2019. Based on average regional household electricity consumption figures.

The ordinary shares are eligible for inclusion in PEPs and ISAs (subject to applicable subscription limits) provided that they have been acquired by purchase in the market and they are permissible assets for SIPPs.

Disclaimer: The information in this document has been prepared by The Renewables Infrastructure Group Limited (the "Company") solely to give an overview of the Company. This document is being distributed in the United Kingdom only to and is directed only at persons who have professional experience in matters relating to investments who fall within the definition of "investment professionals" in Article 19(5) of, or a person falling within Article 49(2) (high net worth companies, etc.) of, the Financial Services and Markets Act 2000 (Financial Promotion) Order 2005 of the United Kingdom (all such persons together being referred to as "relevant persons"). Any person who is not a relevant person should not act or rely on this document or any of its contents. This document is not and should not be construed as an offer to sell or the solicitation of an offer to purchase or subscribe for any investment. The document is intended for information purposes only and does not constitute investment advice. It is important to remember that past performance is not a guide to future performance. Furthermore, the value of any investment or the income deriving from them may go down as well as up and you may not get back the full amount invested.